



**Fast
Geophysical
Positioning
Solutions**

FGPS Limited

24 Cray Rd. Crockenhill, Swanley, Kent, BR8 8LN, UK

Tel: +44 (0)1322 662424

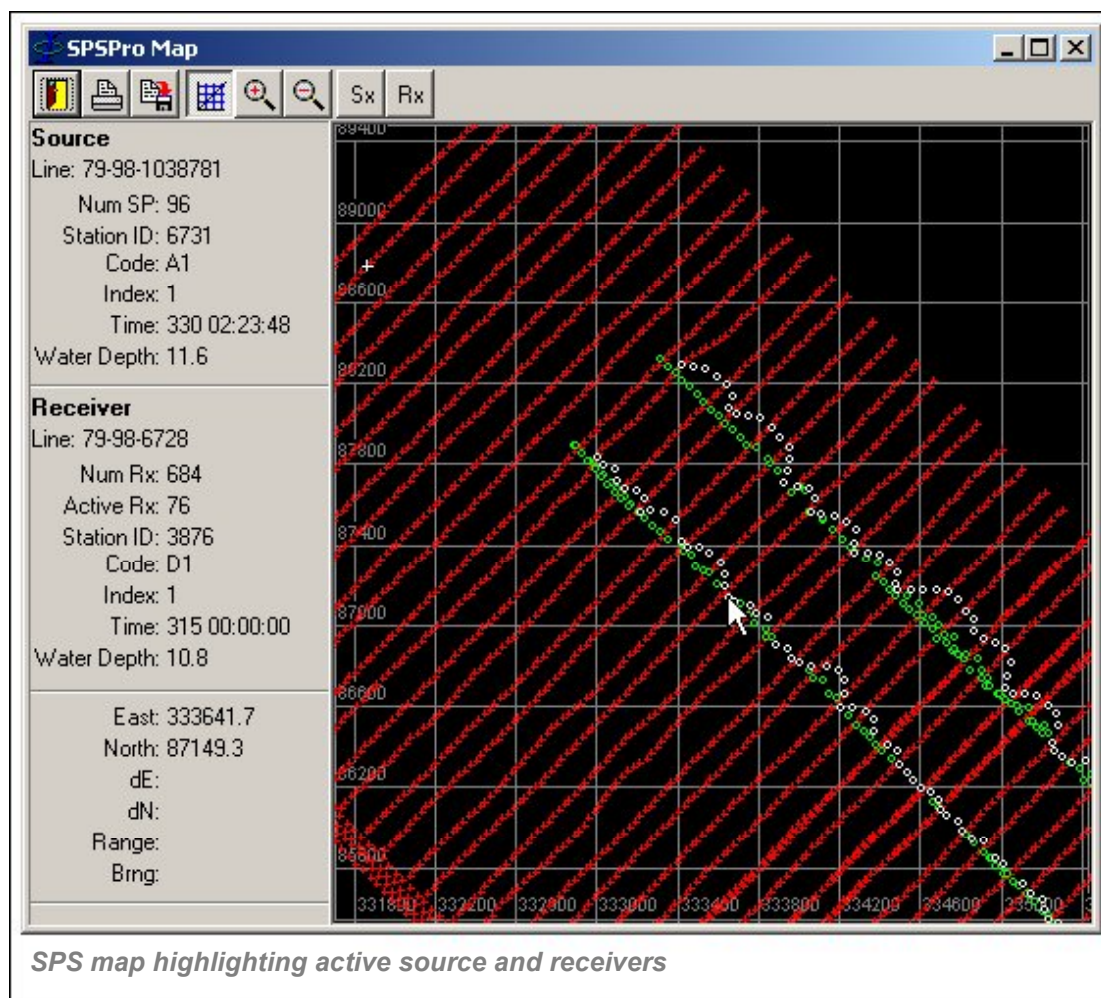
Email: office@fgps.com Web: www.fgps.com

SPSPro

SPSPro is a Windows NT/95/98/2000/XP program which provides interactive graphical and numerical quality appraisal of data recorded in the Shell Processing Support format (SPS), the most commonly used format for recording land and OBC seismic positioning data.

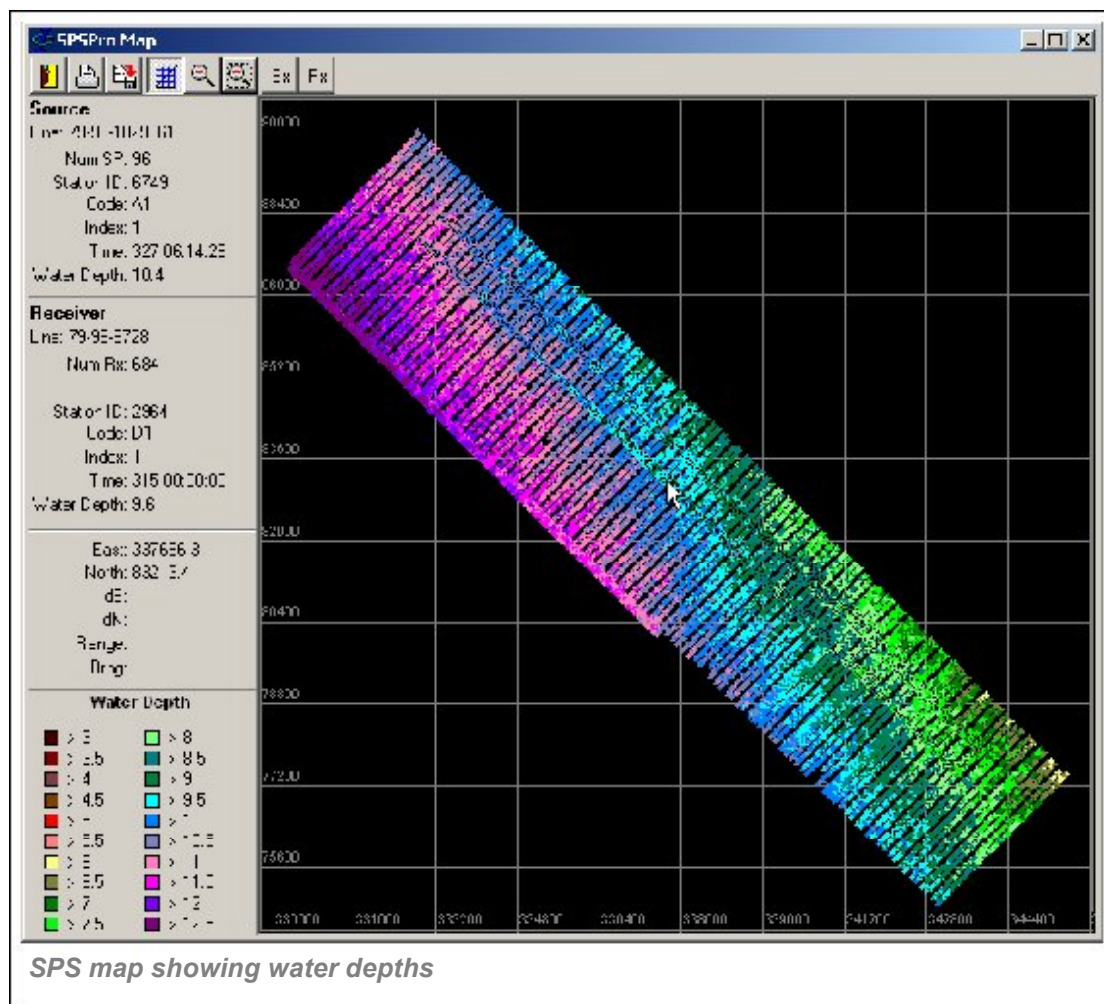
Comprehensive database functions are provided for the manipulation of datasets.

An optional module is available for the computation of receiver coordinates using acoustic ranging or first breaks.



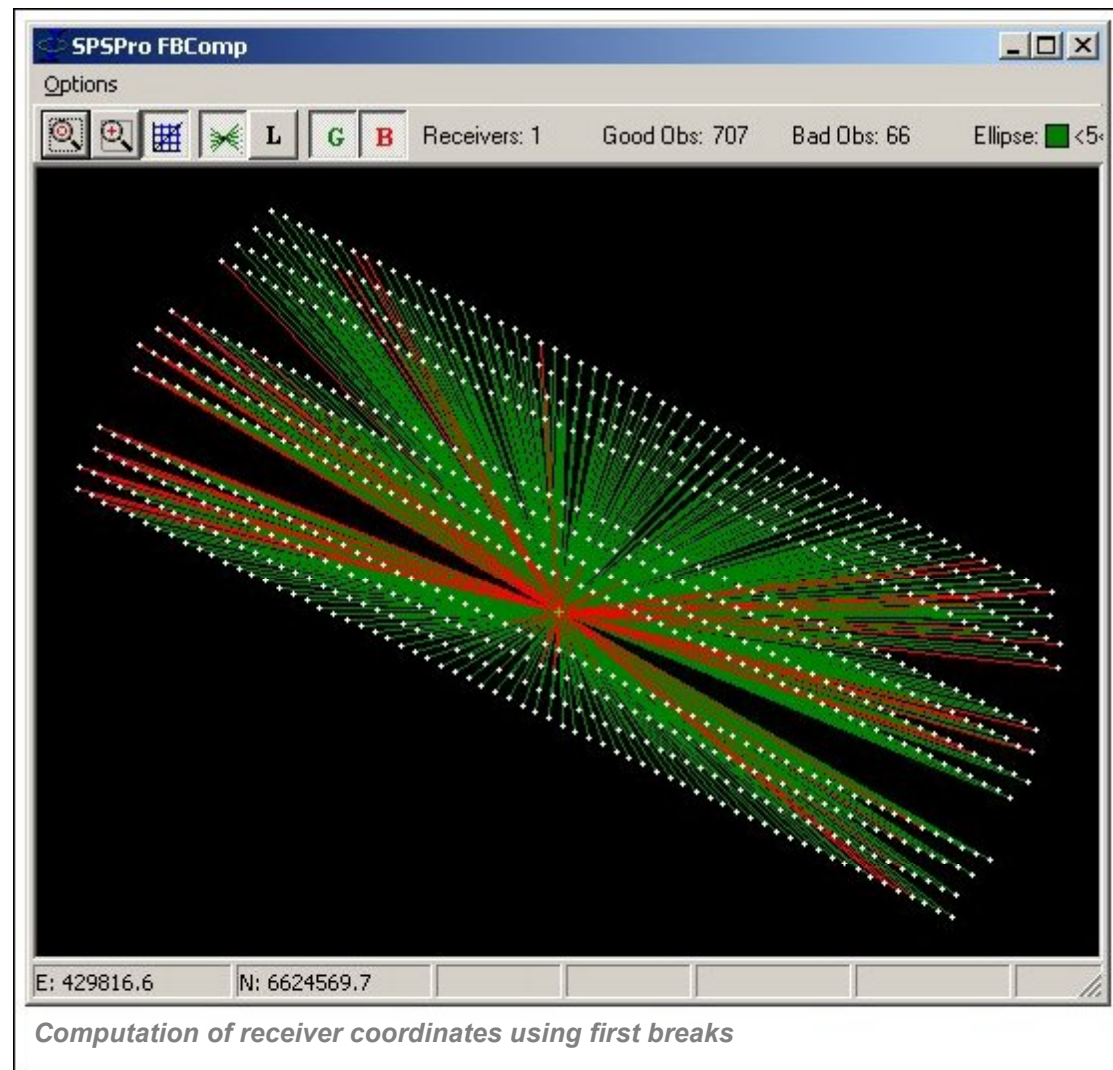
QC Functions

- Format checking.
- File integrity checking.
- Mapping of source and receiver positions by type and index.
- Interactive mapping of active spread.
- Acquisition replay.
- Mapping of source and receiver attributes (static correction, point depth, seismic datum, uphole time, water depth and surface elevation)
- File comparisons, mapped and time series.
- On-screen measurements supported.
- Plotting.
- Time series plots of source and receiver lines for all point attributes.
- Interactive output of source and receiver data to csv file.



Database Functions

- Editing
- File splitting and consolidation
- Sorting
- Search (and replace)
- Receiver bathymetry interpolation from source bathymetry
- Header prefixing



Receiver coordinate computation

- Uses acoustic ranging or first breaks recorded in user defined format.
- First break method models velocity gradient using polynomial of user specifiable order.
- Uses weighted least squares solution.
- Supports Rejection of bad data by Delft Method.
- Full QC statistics available – unit variance, error ellipse etc.